



**VERKOOPTEKENING  
PEMBROKE**

**BOUWNUMMER:**

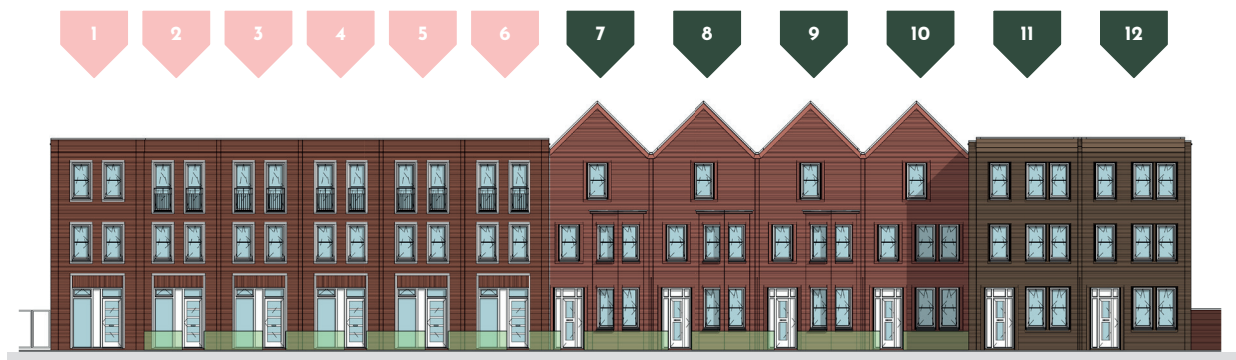
**DI.11**

# Geveloverzichten

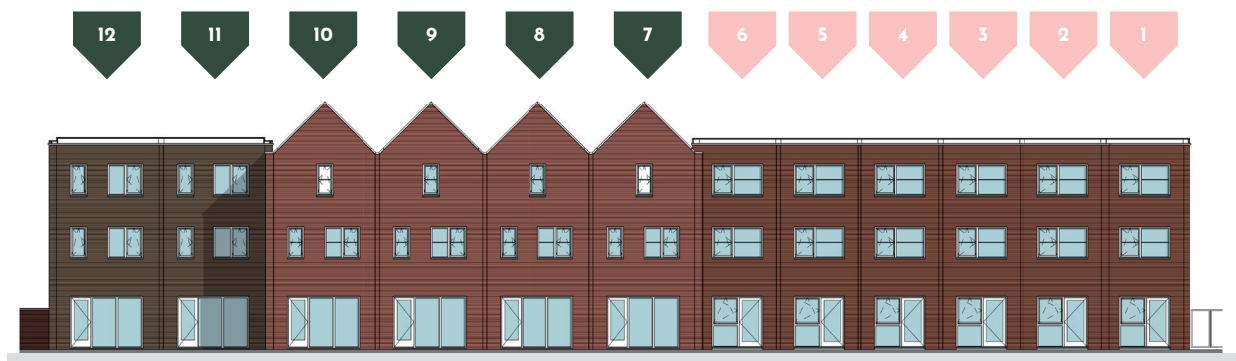
## Bouwnummer D1.01 t/m D1.12

### Legenda woningtypes

- Lloyd
- Pembroke

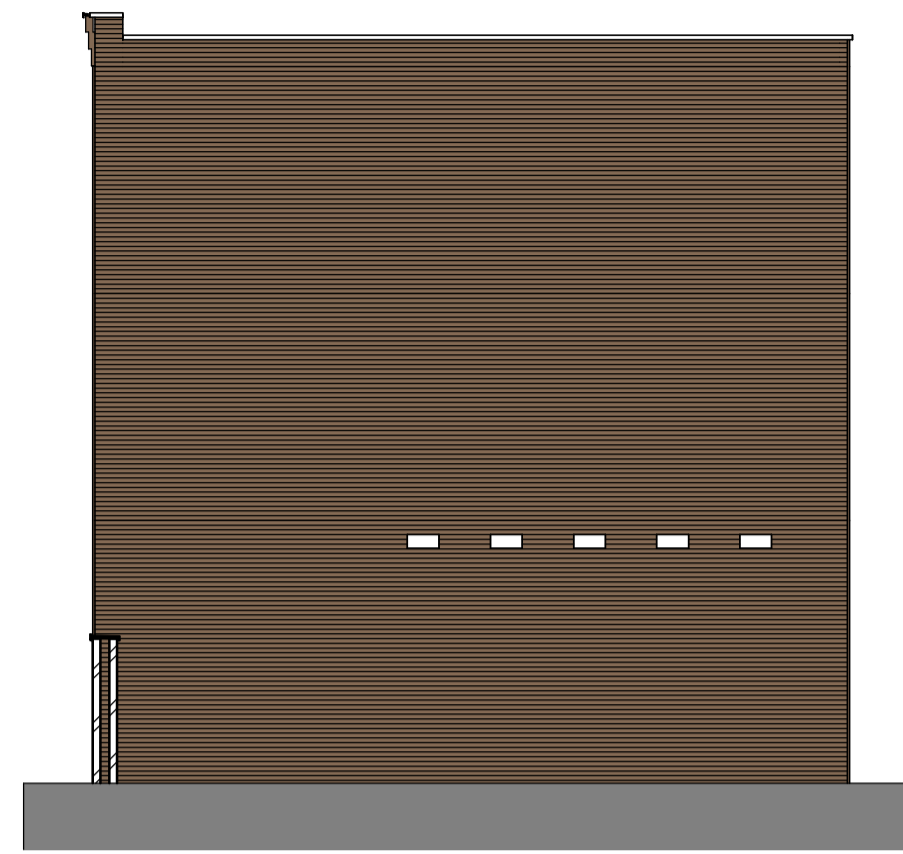


Voorgevel

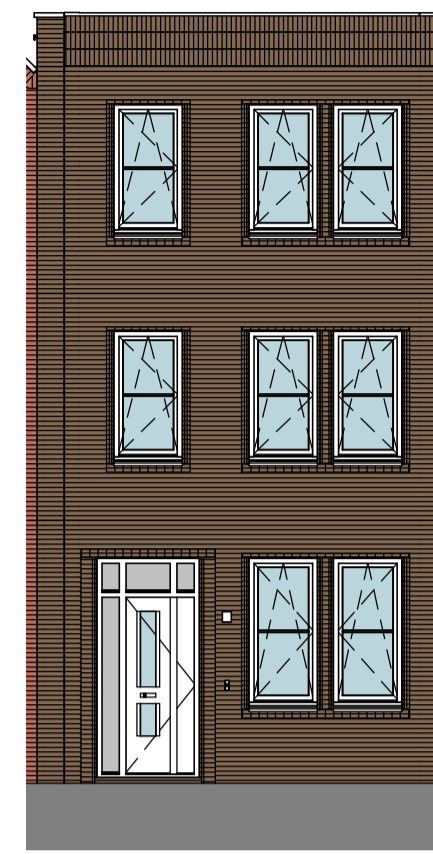


Achtergevel

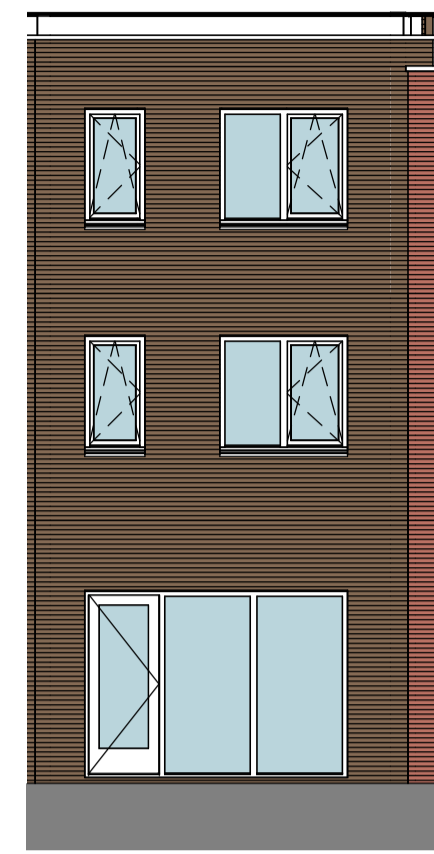
Nestkastvoorzieningen zijn niet opgenomen in dit gevelaanzicht.  
Exacte invulling gevels conform verkooptekening.



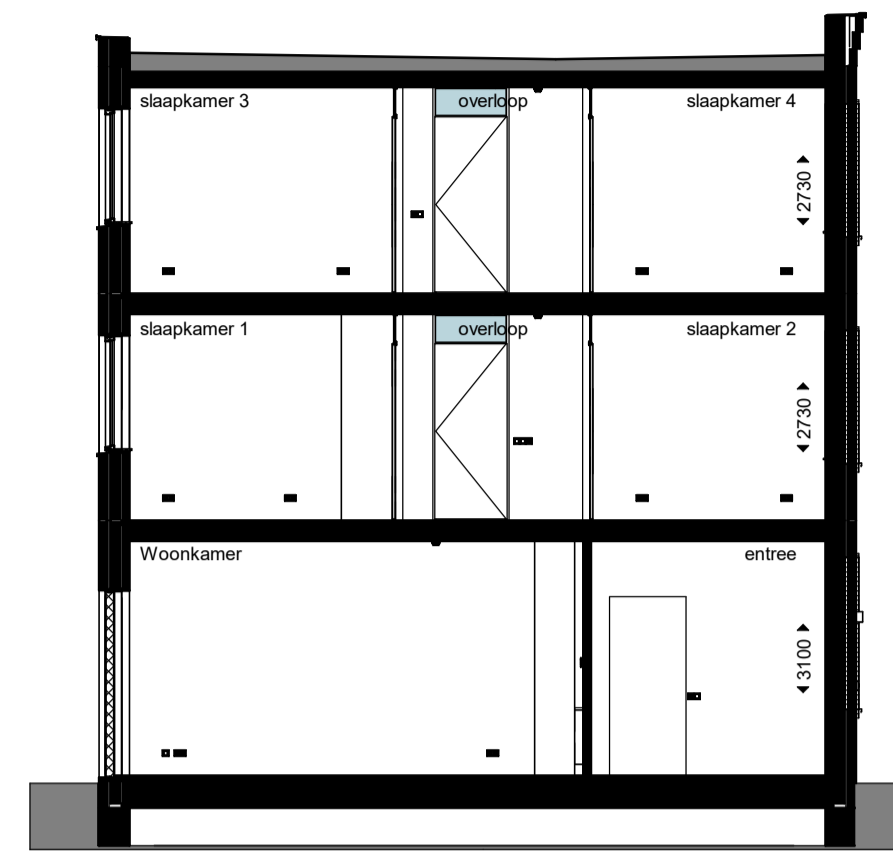
rechter gevel D1.12



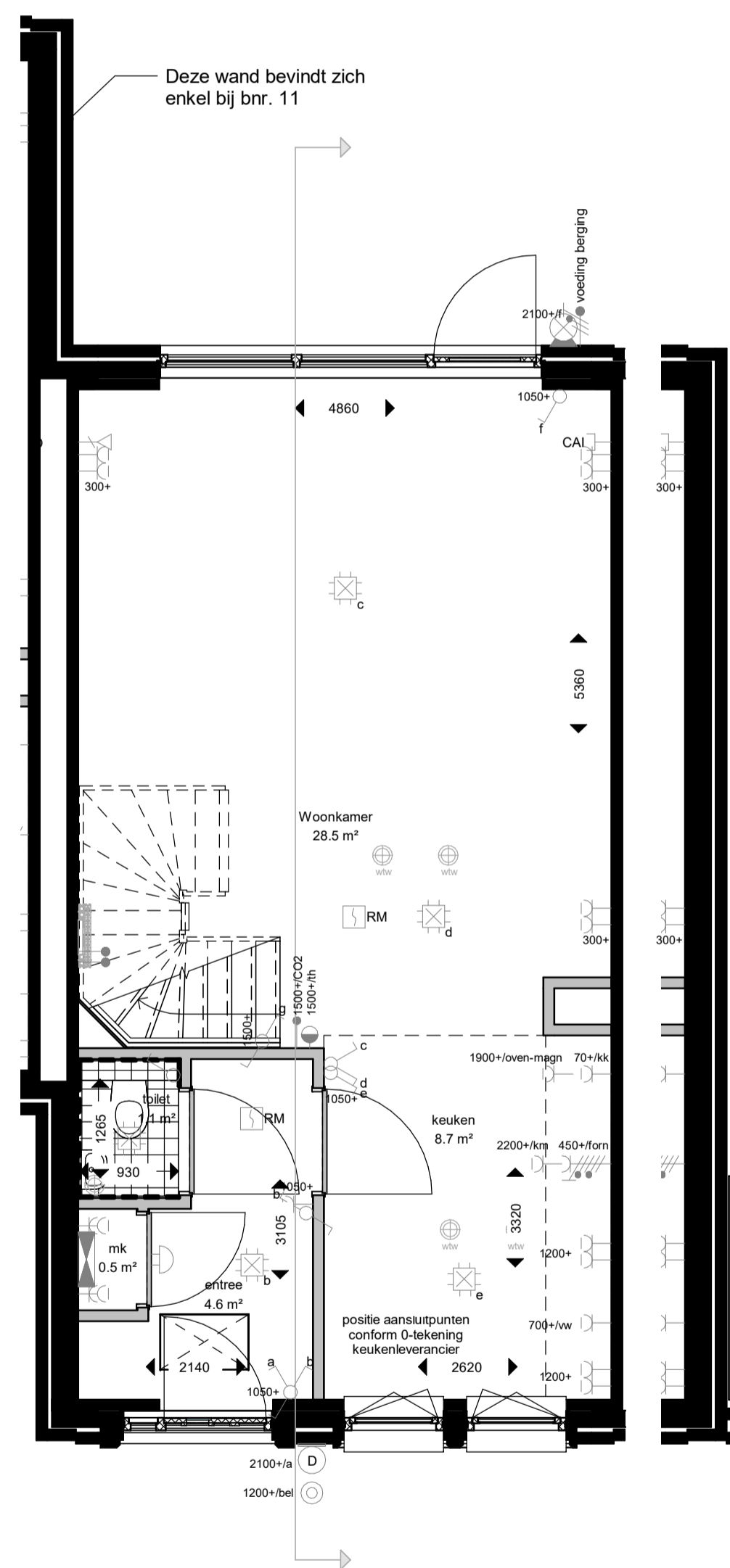
voorgevel



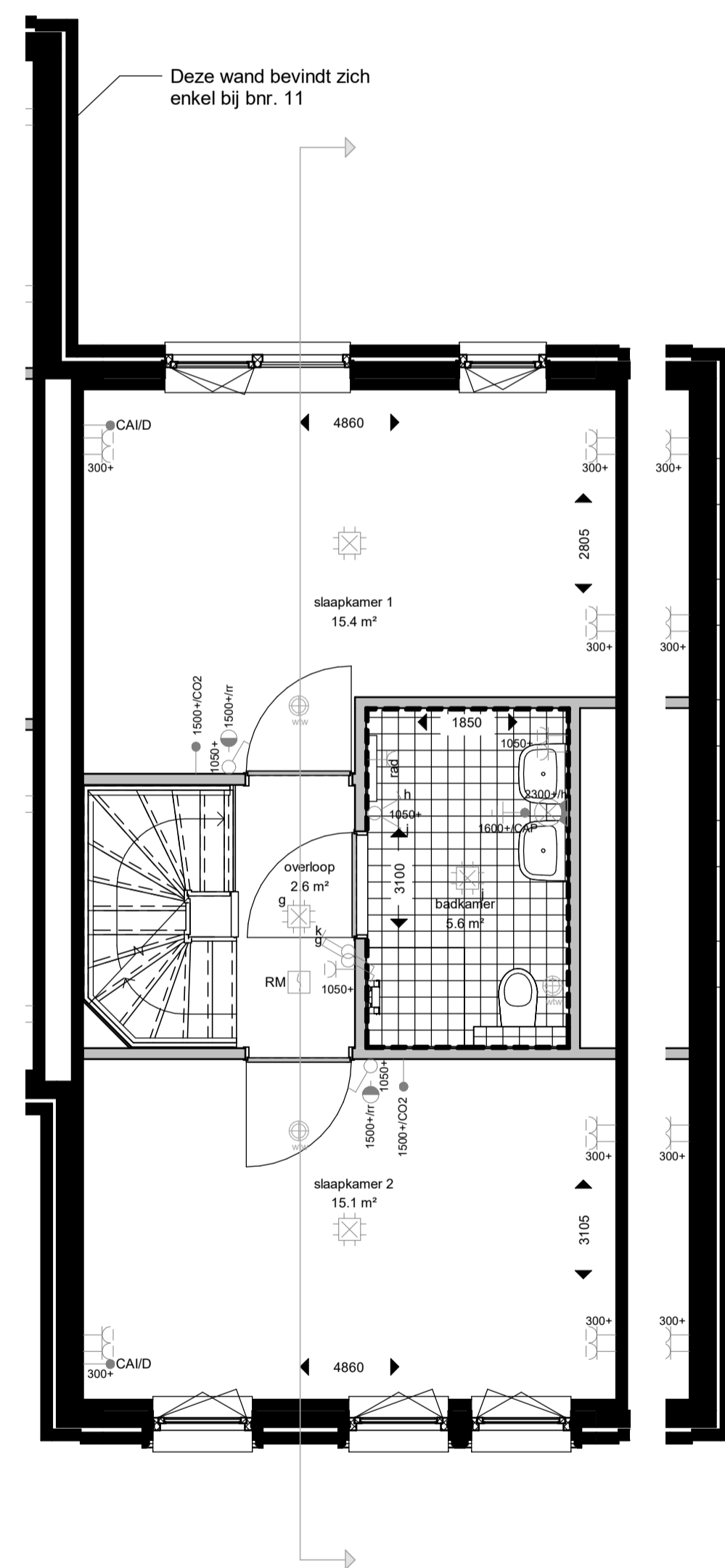
achtergevel



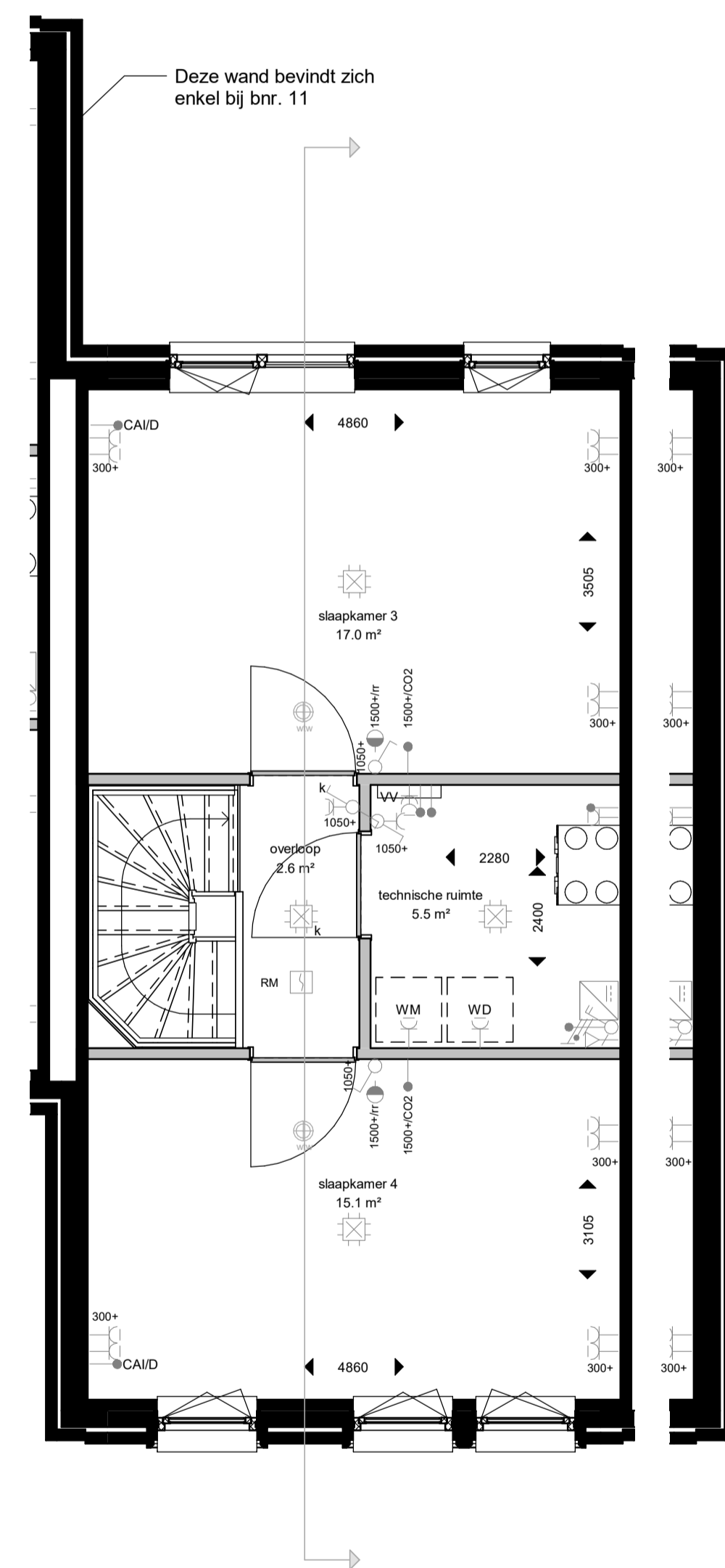
doorsnede



begane grond



eerste verdieping



tweede verdieping

tekeningnummer  
**VK(D1)3BK003**  
 projectomschrijving  
 NEW BROOKLYN, ALMERE  
  
 opdrachtgever  
 Heijmans Vastgoed BV  
 fase  
 Verkoop  
 onderwerp  
 type Pembroke  
 bouwnummer D1.11 en D1.12  
 schaal  
 1:50 / 1:100  
 formaat  
 A1  
 tekeningdatum  
 05-04-2022